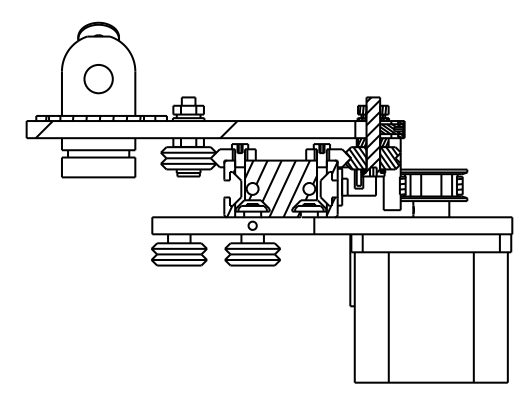
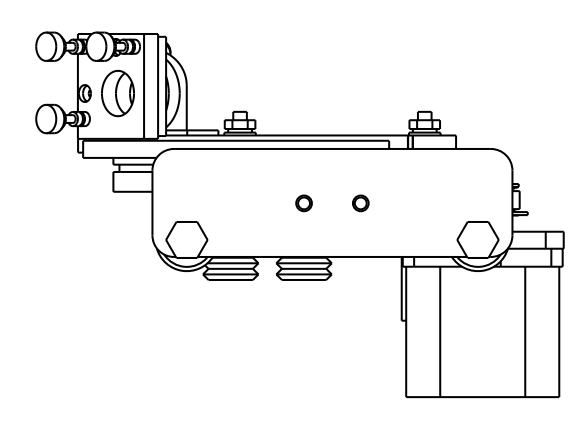
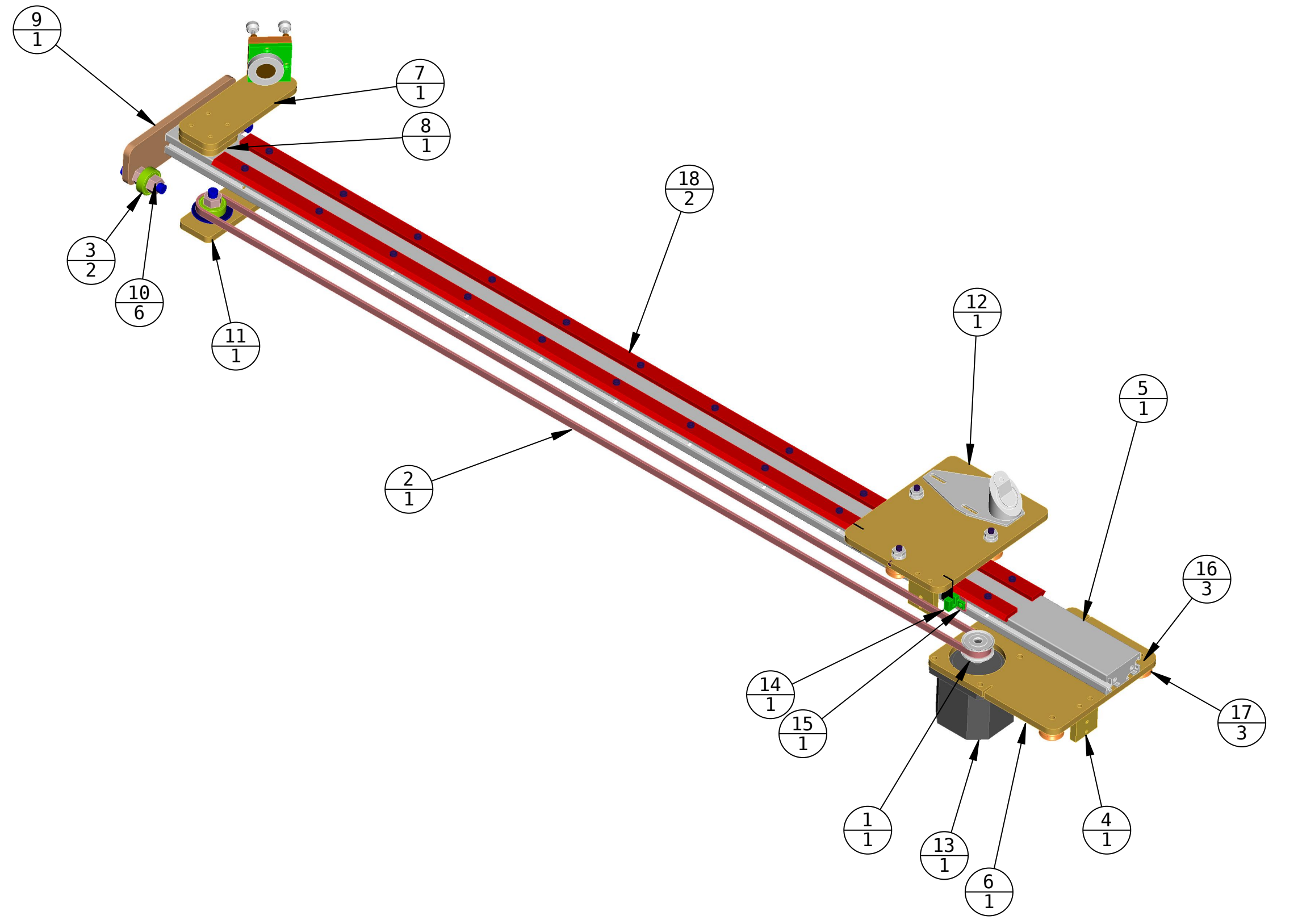
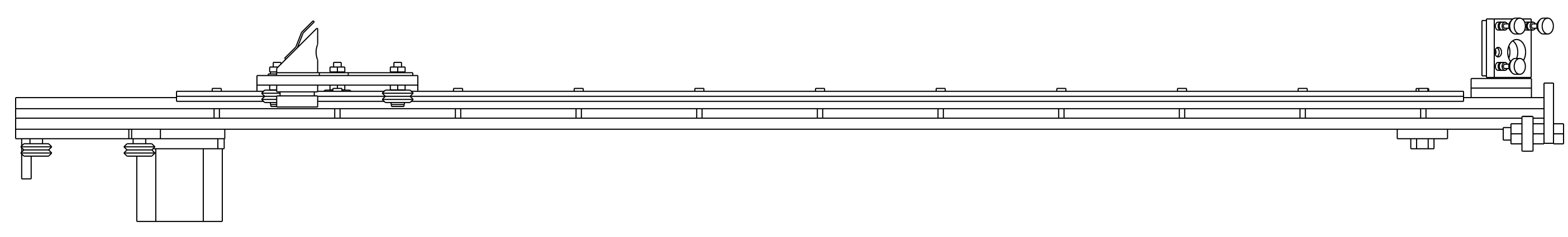
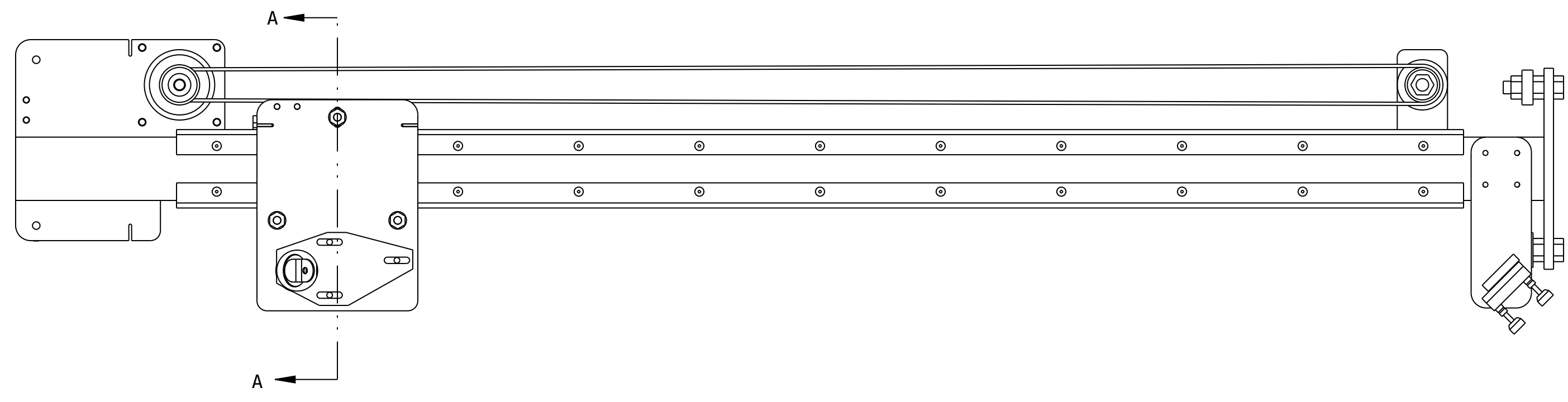
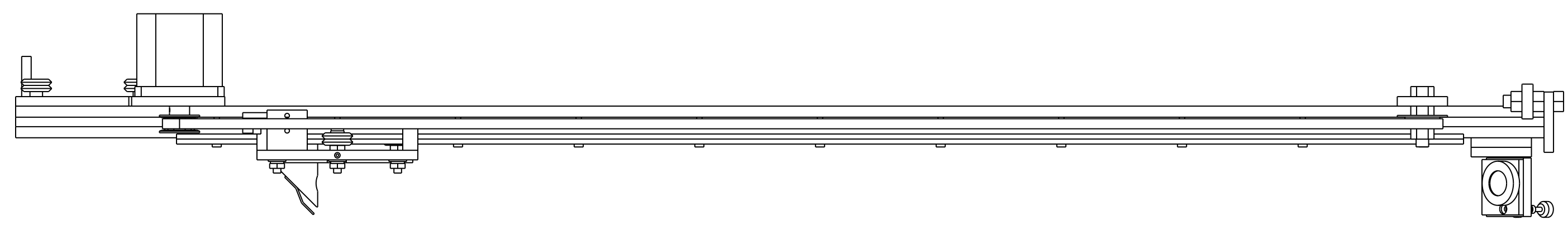


ITEM	SYM	PART NUMBER	QTY	DESCRIPTION
1		A 6A 3-12DF02508	1	TIMING PULLEY .2 PITCH 12 TOOTH
2		A 6R 3-315025	1	TIMING BELT 315 TOOTH
3		bearing_8_22_7	2	BEARING 8mm 22mm 7mm
4		BELT_POST	1	BELT POST
5	F	EXTR_GANTRY	1	MISUMI HFSF5-2040
6		GANTRY_MOTOR_MOUNT	1	GANTRY_MOTOR_MNT
7		GANTRY_MIRROR_BRKT	1	GANTRY_WHEEL_BRKT
8		GANTRY_MIRROR_BRKT_SPACER	1	GANTRY MIRROR BRACKET SPACER
9		GANTRY_WHEEL_PLATE	1	GANTRY WHEEL PLATE
10		HN1032SS	6	HEX NUT #10-32
11		IDLER_ASSY	1	IDLER PULLEY ASSEMBLY
12		LASER_CAR_ASSY	1	LASER CAR ASSEMBLY
13		NEMA_23	1	STEPPER MOTOR NEMA 23
14		PHOTO_INT	1	PHOTO INTERRUPTOR
15		PHOTO_INT_SHIM	1	SHIM, PHOTO INT
16		SPACER	3	SPACER
17	E	V_WHEEL	3	V WHEEL
18		V_RAIL_GANTRY	2	V RAIL GANTRY

REVISIONS				APPROVALS		
SYM	DESCRIPTION	BY	DATE	ENGRG	PROD	Q.A.
1	ORIGINAL	BJD	7/2/2009			
2	REVISED DRIVE DESIGN	BJD	7/6/2009			
3	UPDATED	BJD	7/9/09			
4	UPDATED	BJD	9/6/09			



SECTION A-A



UNLESS OTHERWISE SPECIFIED:		DRAWN	BJD	7/2/2009	GANTRY ASSEMBLY	
FRACTIONAL	± 1/32	DO NOT SCALE	CHECKER			
DECIMAL	.xxx ± .010		MECH. ENGR.			
ANGULAR	.xx ± .020		ELEC. ENGR.			
MATERIAL SPEC:		PROJ. ENGR.			GANTRY	
FINISH SPEC:		CHIEF ENGR.			SCALE	FSCM NO. 16469
						SHEET 1 OF 1