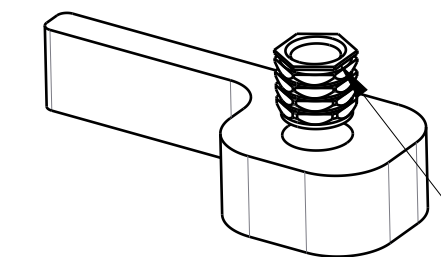
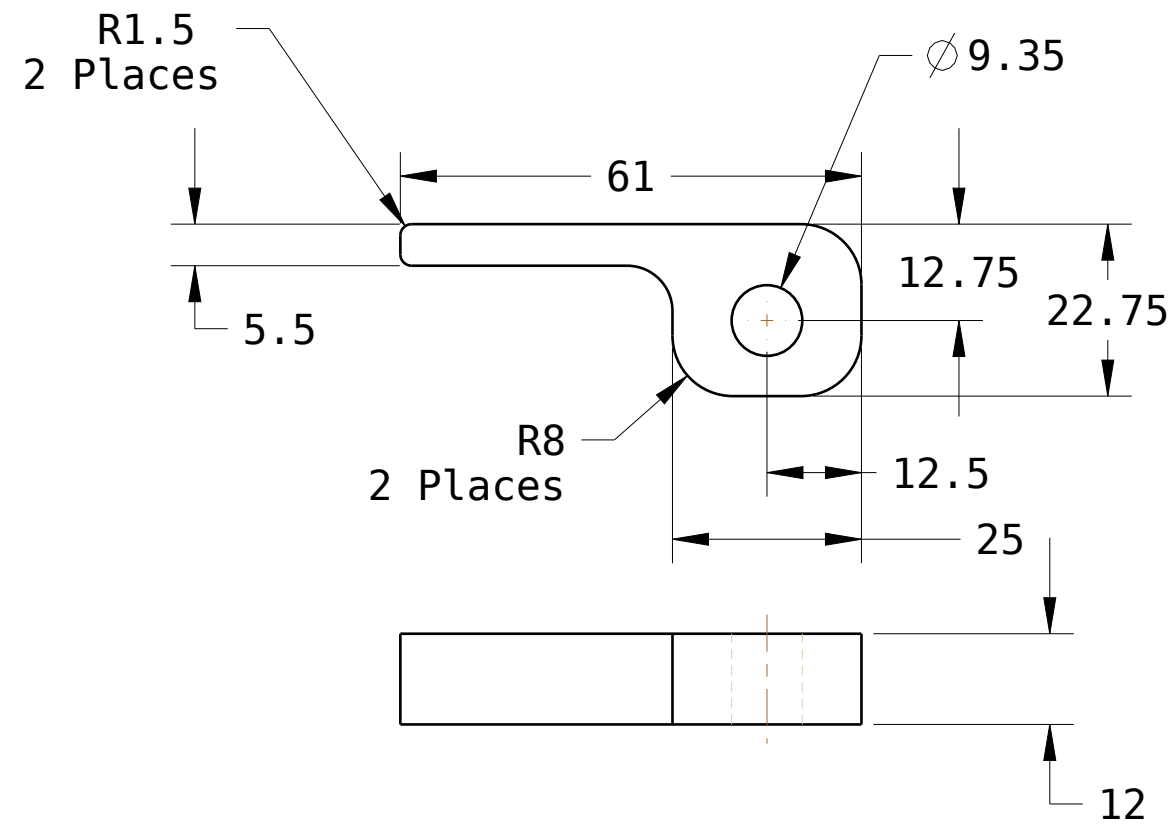
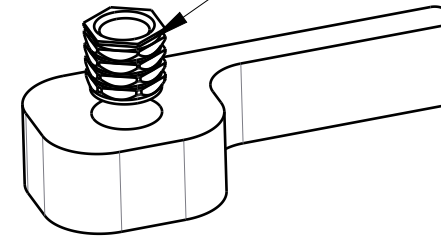


REVISIONS			
SYM	DESCRIPTION	BY	DATE
1	ORIGINAL	BJD	1/22/13



B17060-R

Install fastener perpendicular to part and flush to surface.
PEM P/N NFPC-M8



B17060-L

Notes:

1. There are two version of this part B17060-L and B17060-R. See views above to see which way to install fastener.
2. Material: 12mm (or 1/2 inch) thick HDPE or Delrin, Color: Black



The work is licensed under a Creative Commons Attribute-Share Alike 3.0 License

DRAWN	BJD	1/22/13
CHECKER		
MECH. ENGR.		
ELEC. ENGR.		
PROJ. ENGR.		
CHIEF ENGR.		

Z Lift Bar		SCALE


www.buildlog.net
B17060-*
SHEET 1 OF 1