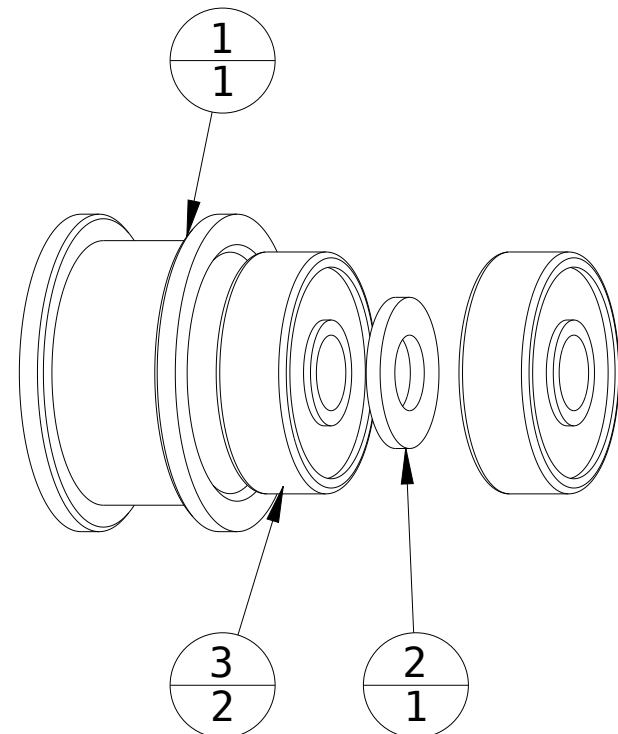
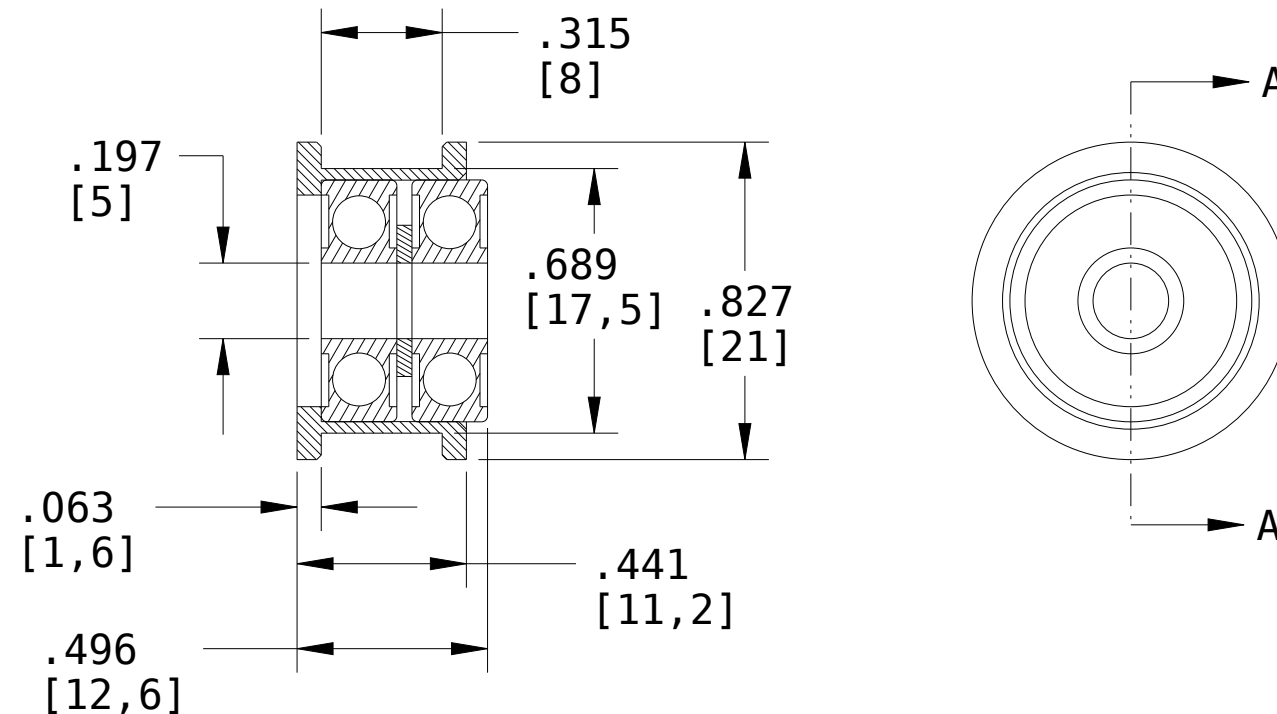


ITEM	PART NUMBER	QTY	DESCRIPTION
1	B17023	1	Smooth Idler Wheel
2	B18026	1	Shim 5mm 10mm 1mm Thk.
3	BEARING_5_16_5	2	Bearing 5mm ID 16mm OD 5mm Thk.

REVISIONS			
SYM	DESCRIPTION	BY	DATE
1	ORIGINAL	BJD	7/22/11



SECTION A-A



Notes:

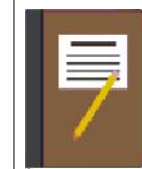
1. Press bearings in wheel with shim washer between bearings. Parts can be aligned using a 5mm screw during assembly.
2. A small amount of cyanacrylate (super glue) can be used on bearings to improve pullout strength (typically not required).



The work is licensed under a Creative Commons Attribution-Share Alike 3.0 License

DRAWN	BJD	7/22/11
CHECKER		
MECH. ENGR.		
ELEC. ENGR.		
PROJ. ENGR.		
CHIEF ENGR.		

Double Bearing Idler Assy	
SCALE	



www.buildlog.net

B30041

SHEET 1 OF 1