

1

2

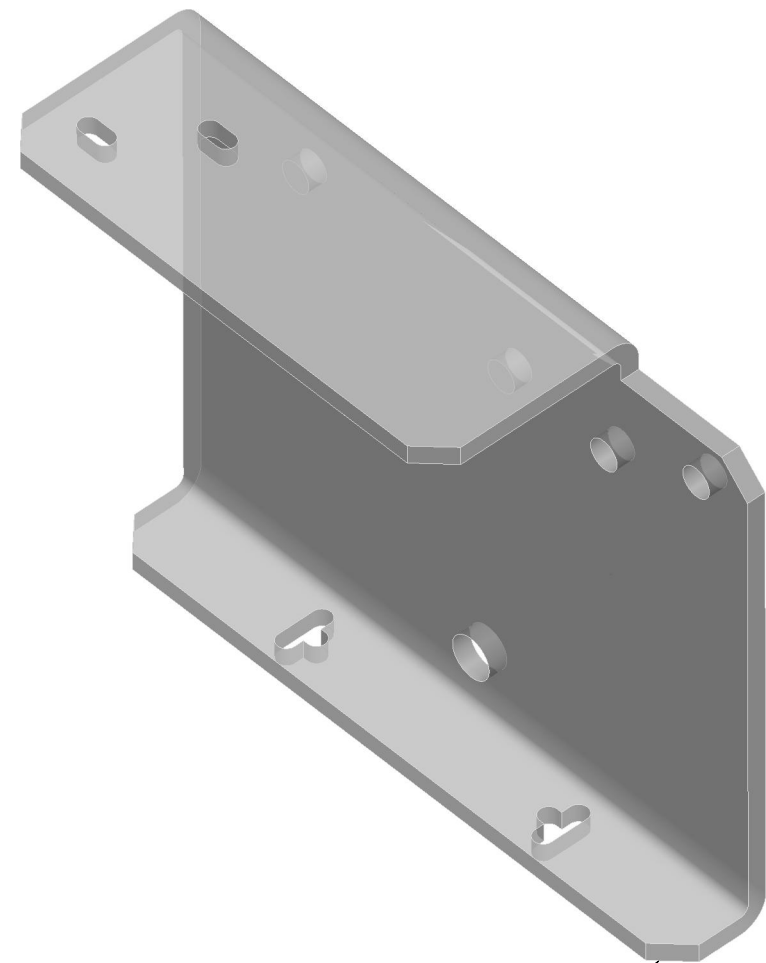
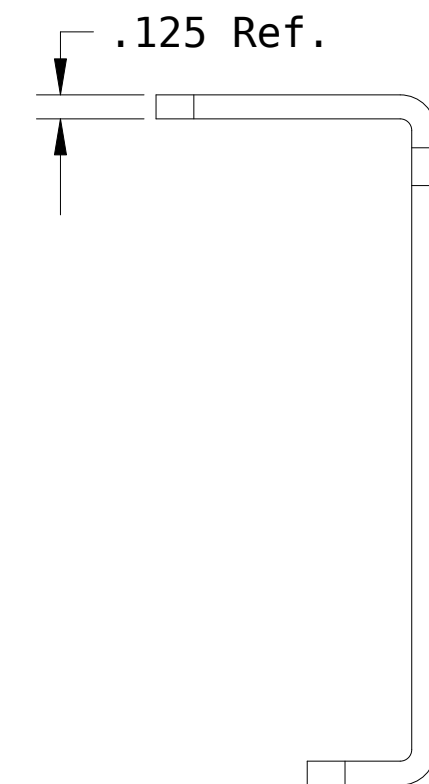
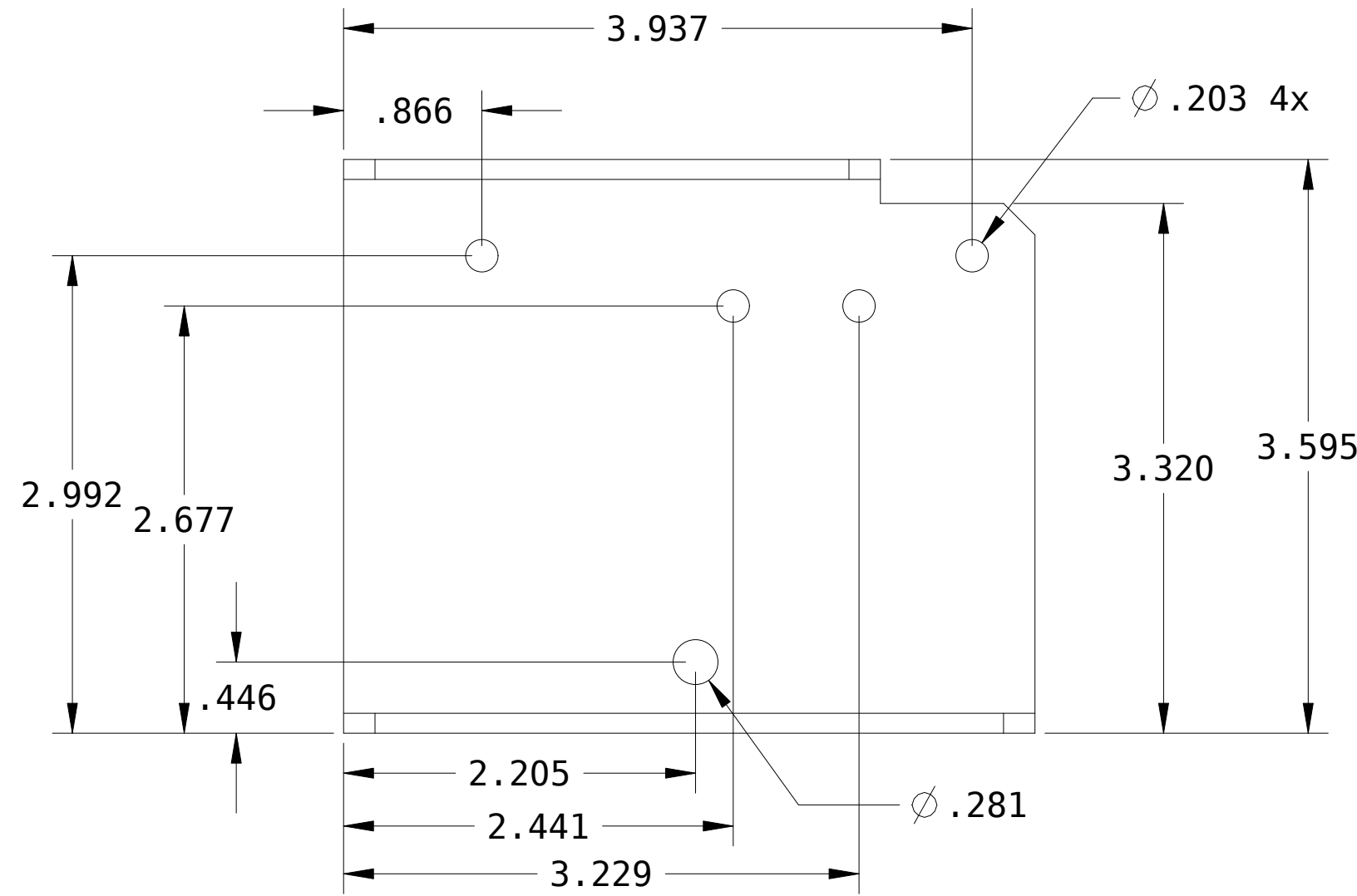
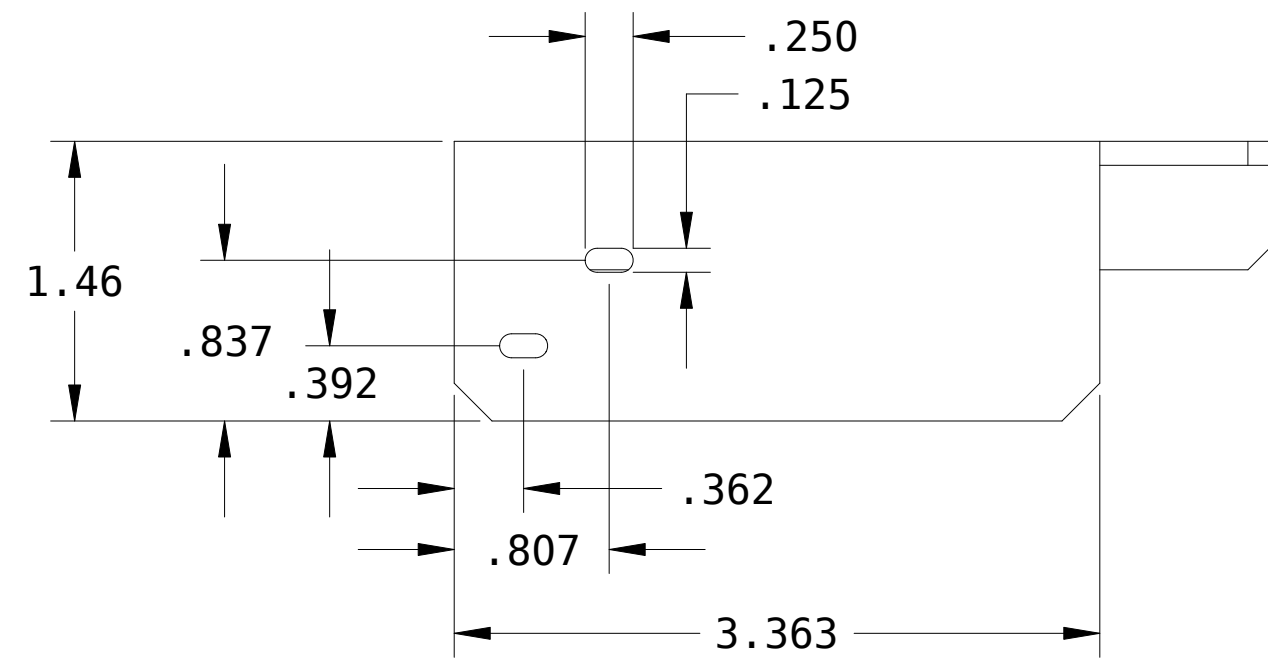
3

4

5

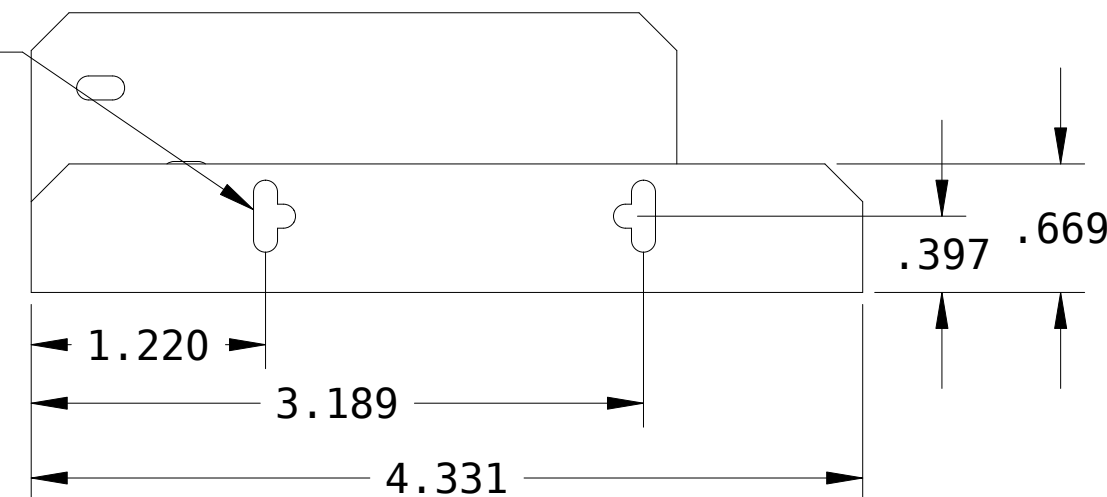
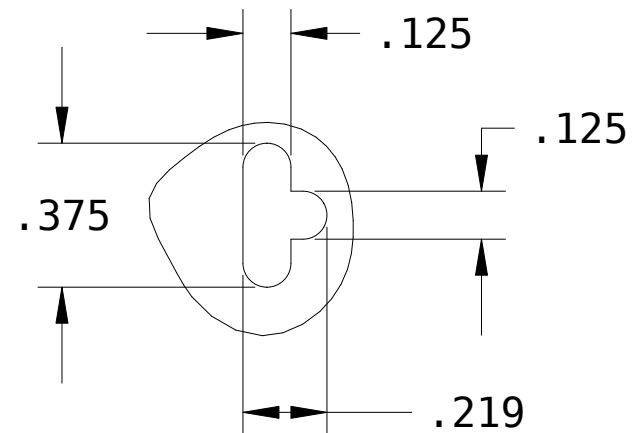
6

REVISIONS			
SYM	DESCRIPTION	BY	DATE
1	ORIGINAL	BJD	12/16/10
2	Updated Design	BJD	1/13/11
3	Added missing dims	BJD	1/25/11
4	Moved lower wheel hole	BJD	10/18/11



Break all outside corners 0.18 x 45°

See Detail View



Notes:

1. Material: .125 Thick 5052 Aluminum.
2. Inside Bend radii to be sharp to .06 rad. max. Outer edges shall not show signs of fracture or crazing.
3. Matial grain direction at suppliers descretion.
4. Finish: Clear Iridite (RoHS Compliant)

SCALE 2.000



The work is licensed under a Creative Commons Attribute-Share Alike 3.0 License

DRAWN	BJD	12/1/16
CHECKER		
MECH. ENGR.		
ELEC. ENGR.		
PROJ. ENGR.		
CHIEF ENGR.		

Y Bearing Plate



www.buildlog.net

C30001-013

SCALE

SHEET 1 OF 1