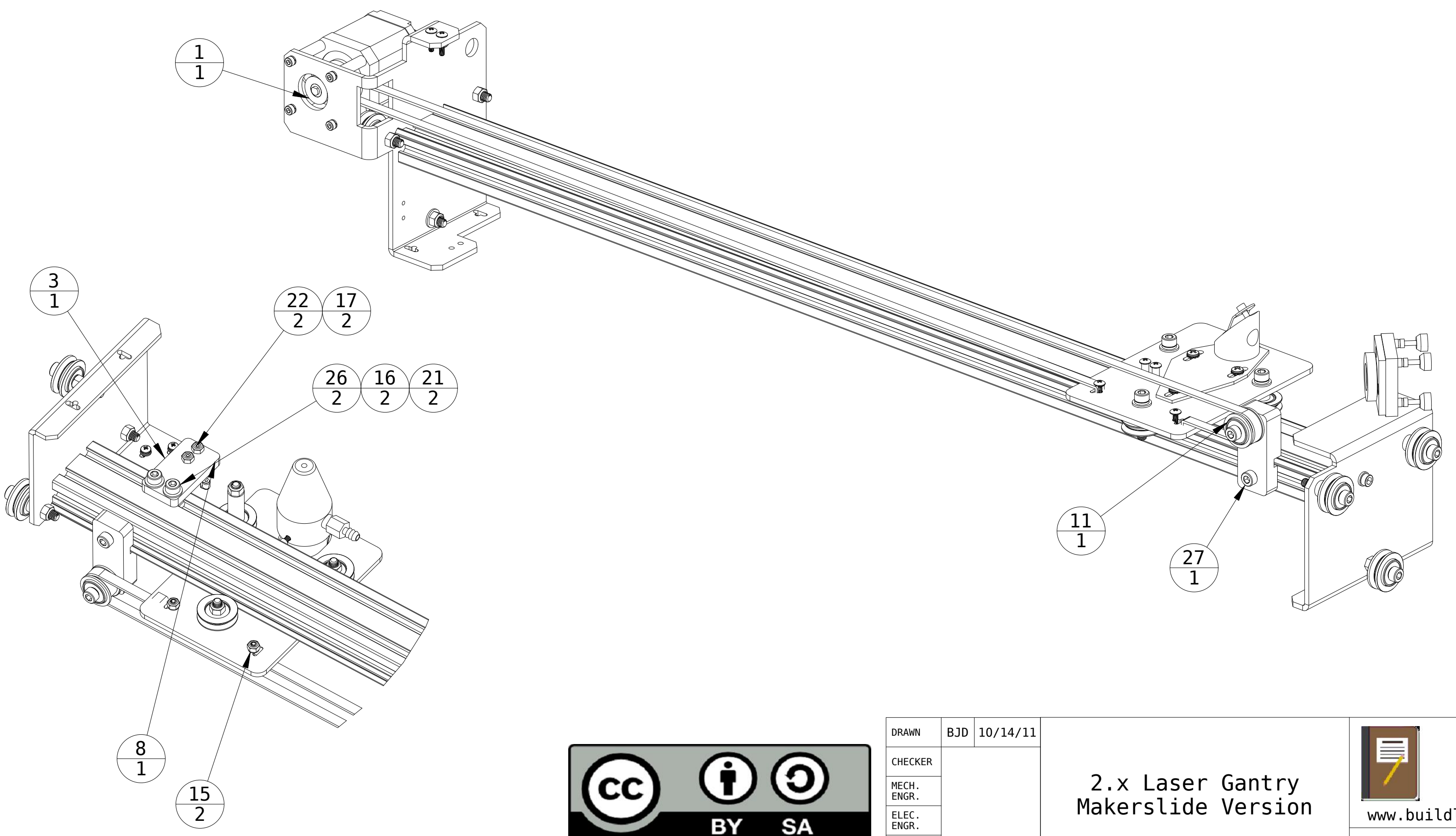
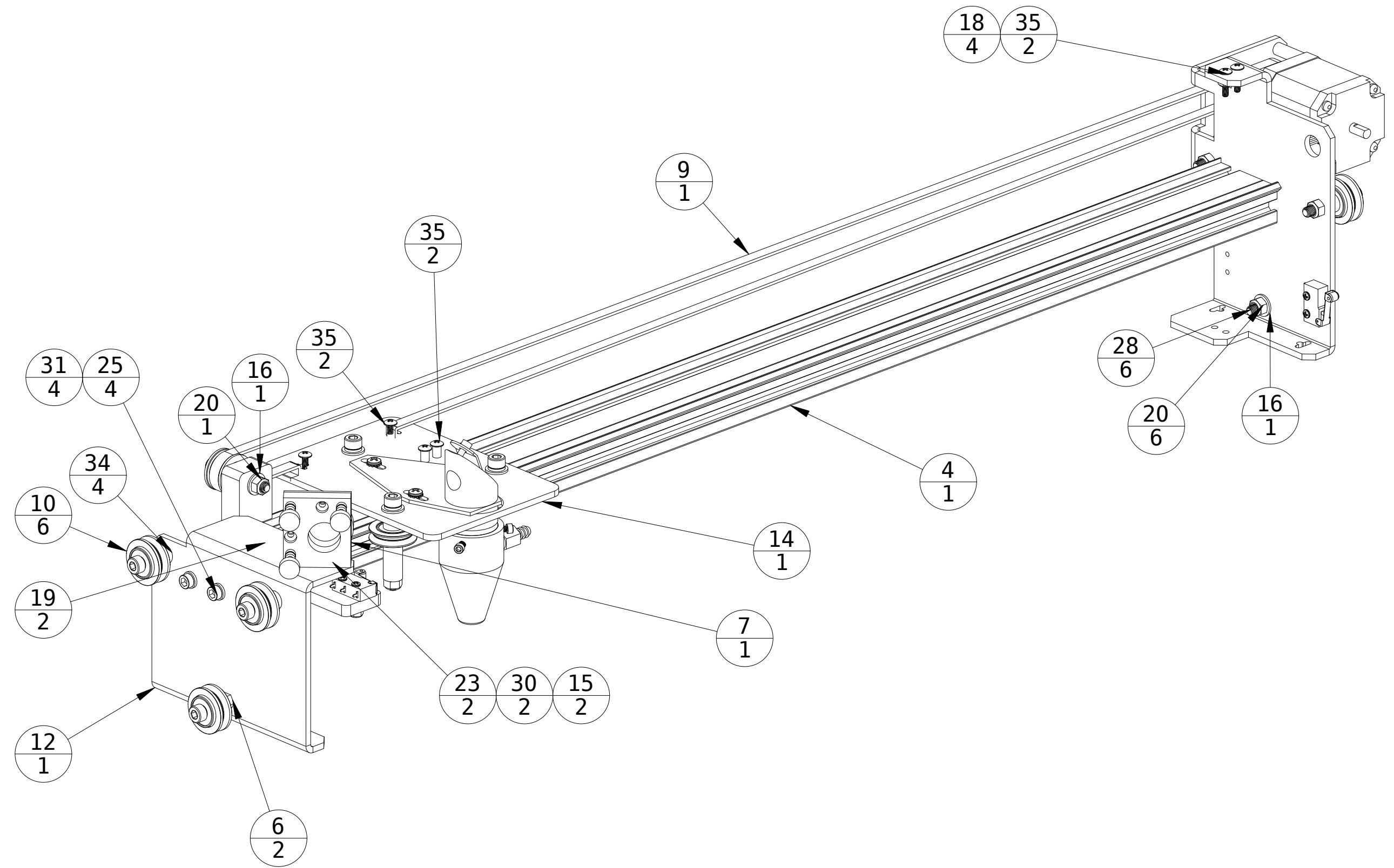
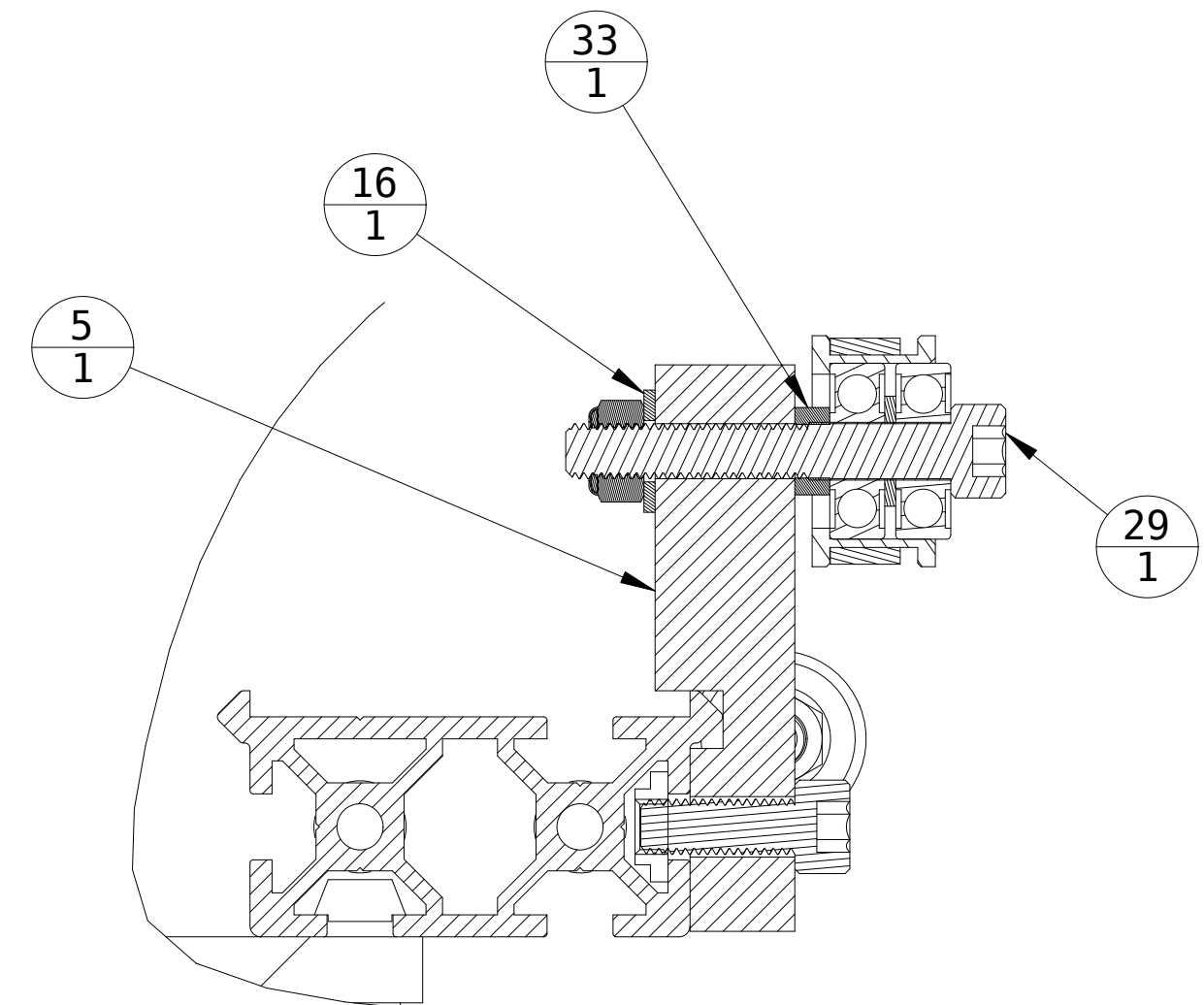
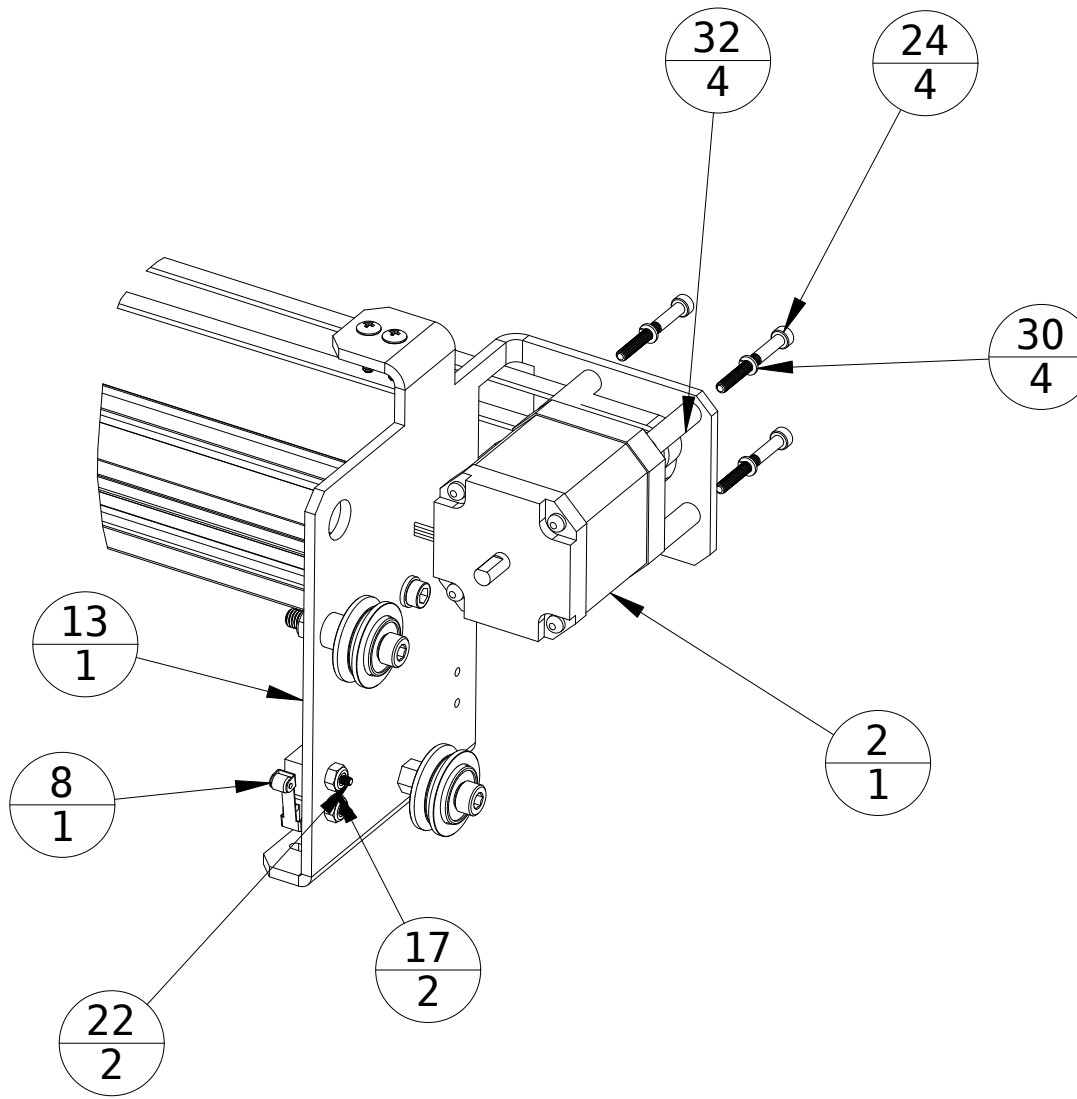
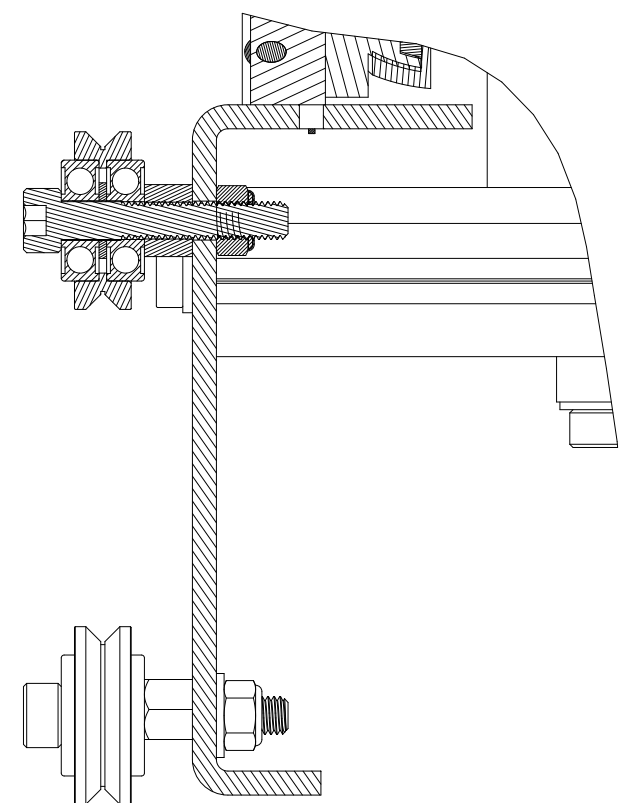


ITEM	PART NUMBER	QTY	DESCRIPTION
1	A_6T16M020DF6005	1	Pulley MXL 20 Tooth 5mm Shaft
2	B10-10001	1	Nema 17 Stepper Motor
3	B17007	1	Limit Switch Bracket
4	B17022-560	1	Makerslide 700mm Long
5	B17041	1	Idler Pulley Bracket
6	B18001-001	2	Eccentric Spacer
7	B28006	1	Laser Mirror Assembly
8	B28009	2	Microswitch, Roller Type
9	B28021	1	MXL Belt Cut 60in
10	B30037	6	Dual Bearing V Wheel
11	B30041	1	Double Bearing Idler Assy
12	C30001-013	1	Gantry End Plate, Left
13	C30001-014	1	Gantry Bracket, Right
14	C30001-020	1	2.x Laser Carriage Assy
15	FLW04SS	4	Flatwasher #4 Std Size
16	FLW10SS	5	Flat Washer #10
17	HN0256NL	4	Hex Nut #2-56 Nylon Locking
18	HN0440NL	4	Hex Nut #4-40 Nylon Locking
19	HNKK5-5	2	Pre-Assy Nut M5 Misumi HNKK5-5
20	HNM5NL	7	Hex Nut M5 Nylock
21	HNTP5-5	2	Post Assembly Spring Nut M5
22	PHMS025610S	4	Pan Head Mach Screw #2-56x5/8
23	PHMSM308S	2	Pan Head Mach Screw M3 x 8mm
24	SHMSM330S	4	Socket Head Mach Screw M3 x 30mm
25	SHMSM512	4	Socket Head Screw M5x12mm
26	SHMSM512S	2	Socket Head Mach Screw M5 x 12mm
27	SHMSM514S	1	Socket Head Mach Screw M5 x 14mm
28	SHMSM530S	6	Socket Head Mach Screw M5 x 30mm
29	SHMSM535S	1	socket Head Mach Screw M5 x 35mm
30	SLW04SS	6	Split Lock Washer #4
31	SLW10SS	4	Split Lock Washer #10
32	SPACER_115_250_875	4	Spacer .115 ID .250 OD .875Lg.
33	SPACER_192_312_125	1	Spacer .192 ID .312 OD .125 Lg.
34	SPACER_192_375_25	4	Spacer .192 ID .375 OD .25 Lg.
35	THMS044008S	6	Truss Head #4-40 x 1/2"

REVISIONS			
SYM	DESCRIPTION	BY	DATE
1	ORIGINAL	BJD	10/14/11
2	Cleanup	BJD	11/9/11

F
E
D
C
B
A



The work is licensed under a Creative Commons Attribution-Share Alike 3.0 License

DRAWN	BJD	10/14/11	 www.buildlog.net D30043
CHECKER			
MECH. ENGR.			
ELEC. ENGR.			
PROJ. ENGR.			
CHIEF ENGR.			SCALE
			SHEET 1 OF 1