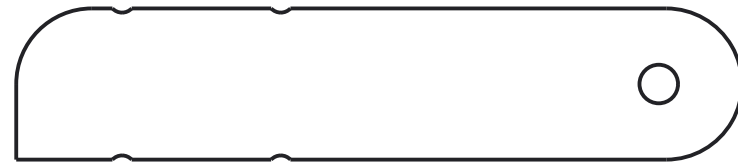
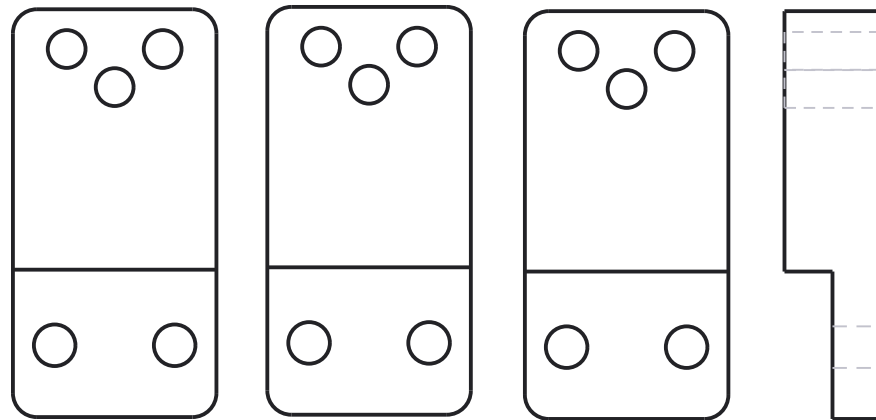


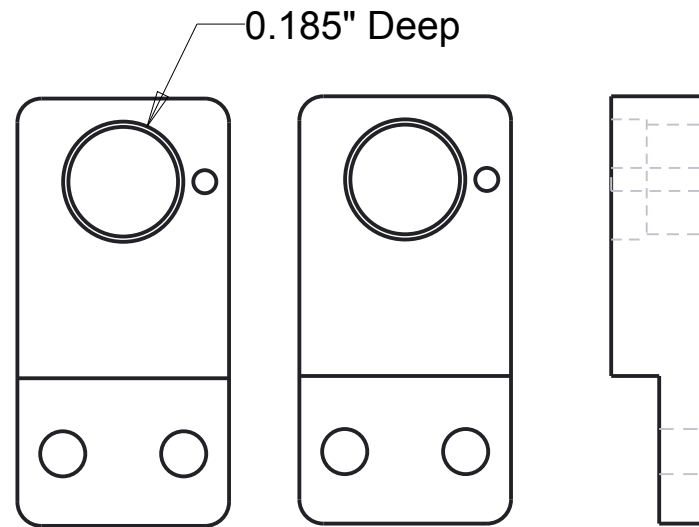
C51002
Rev 1 2/23/11
Rev 2 2/27/11
Rev 3 3/12/11
Rev 4 7/31/2011 updated to smooth idler



B17011
Qty 1

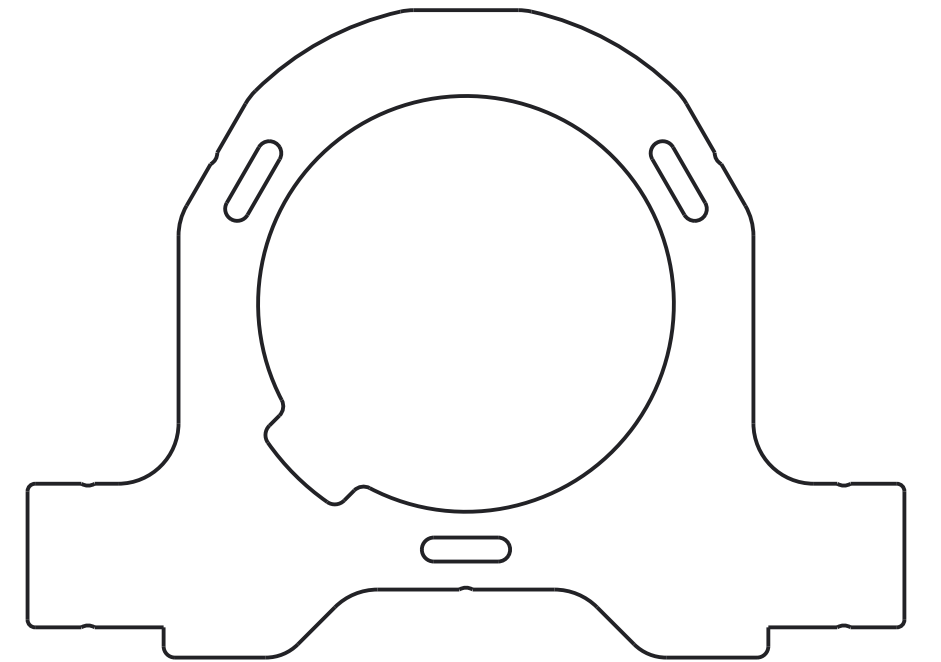
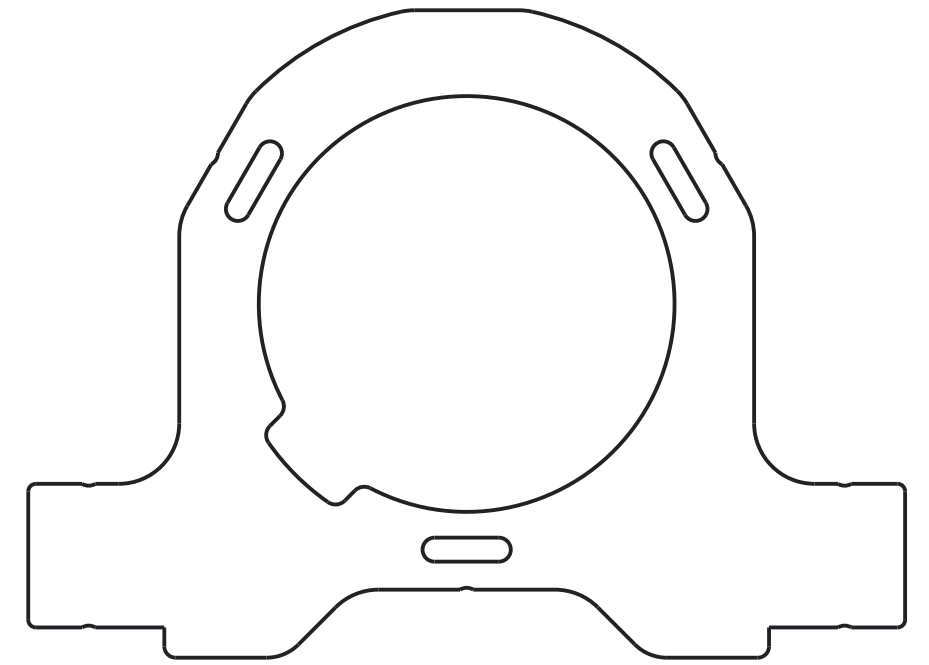


B17034
Qty 3



0.185" Deep

B17016
Qty 2



C17010
Qty 2

Notes:
1. Material: 1/2 Thk HDPE